



INTEQ

Company : Overseas Energy Holdings Ltd

Well : Westwood 1

Interval : -10.00 - 1711.33 meters

Created : 02/Jan/2010 3:54:40 PM



## DRILLING DATA PLOT

ROP

WOB Avg

INTERPRETED  
LITHOLOGY

ROP Backup

Spaulding Rig drilled  
203mm(8") pilot hole to 112m  
with Air

MD meters 1:500

0

0

10

20

30

40

50

60

70

80

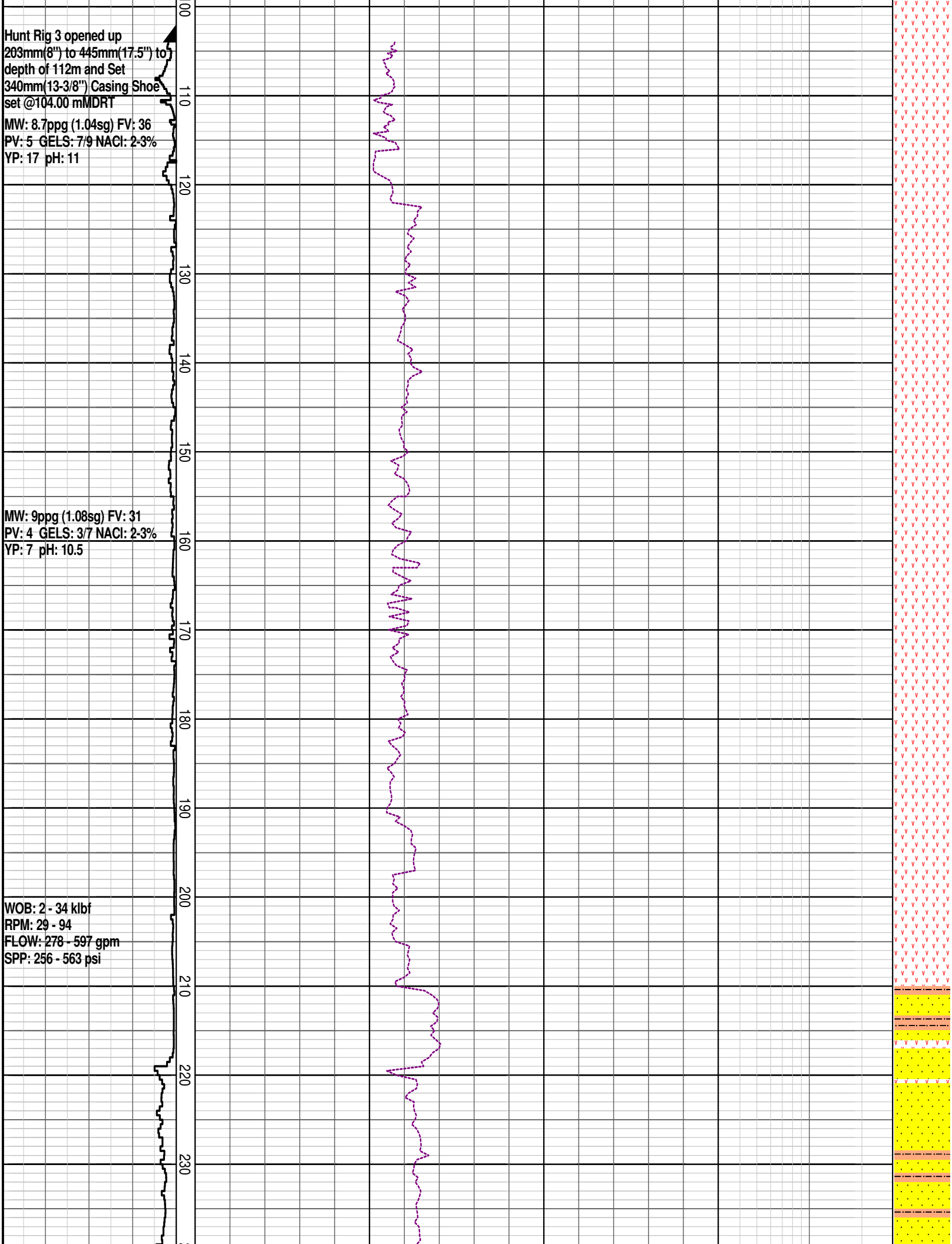
90

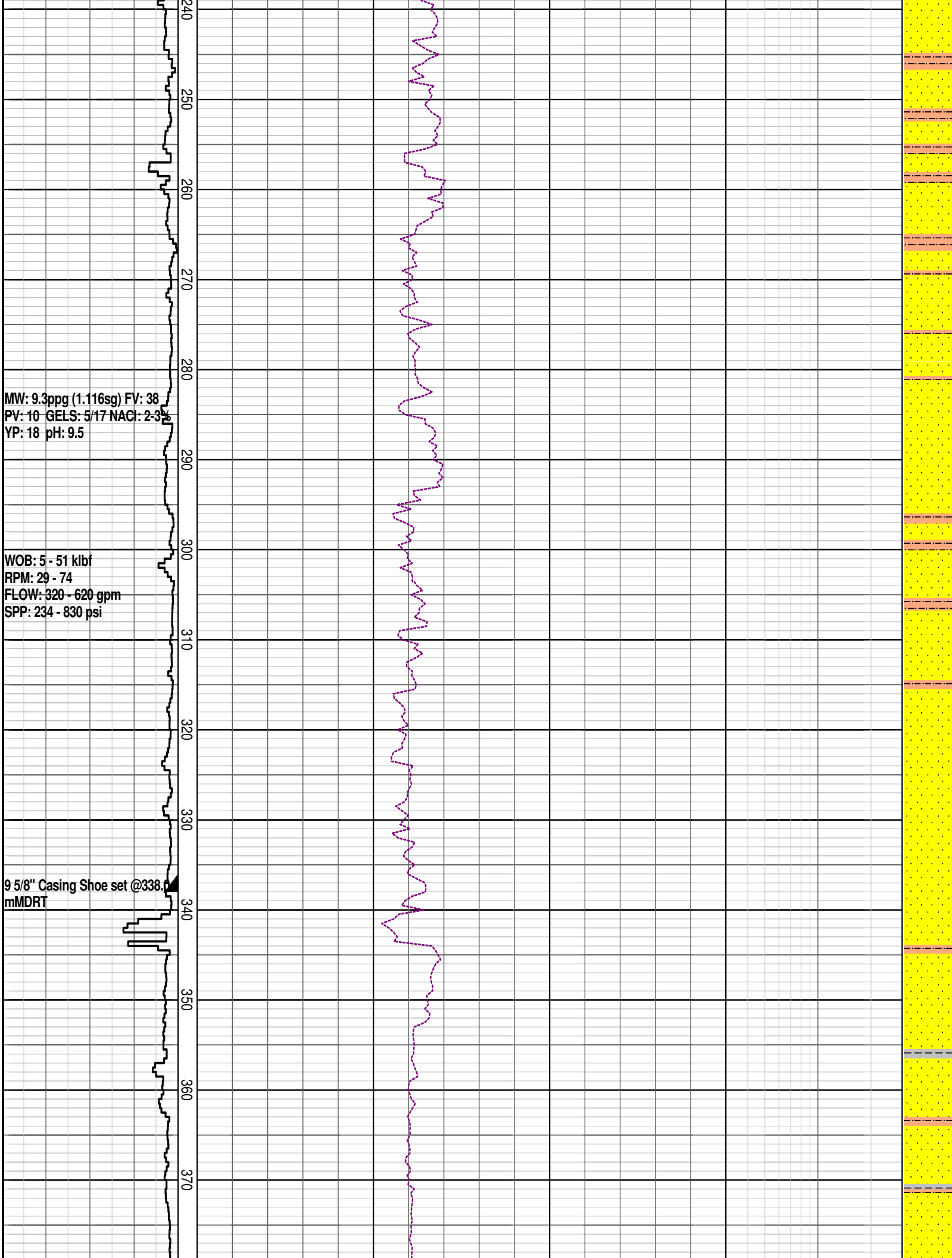
1

Hunt Rig 3 opened up  
203mm(8") to 445mm(17.5") to  
depth of 112m and Set  
340mm(13-3/8") Casing Shoe  
set @104.00 mMDRT  
MW: 8.7ppg (1.04sg) FV: 36  
PV: 5 GELS: 7/9 NACl: 2-3%  
YP: 17 pH: 11

MW: 9ppg (1.08sg) FV: 31  
PV: 4 GELS: 3/7 NACl: 2-3%  
YP: 7 pH: 10.5

WOB: 2 - 34 klbf  
RPM: 29 - 94  
FLOW: 278 - 597 gpm  
SPP: 256 - 563 psi

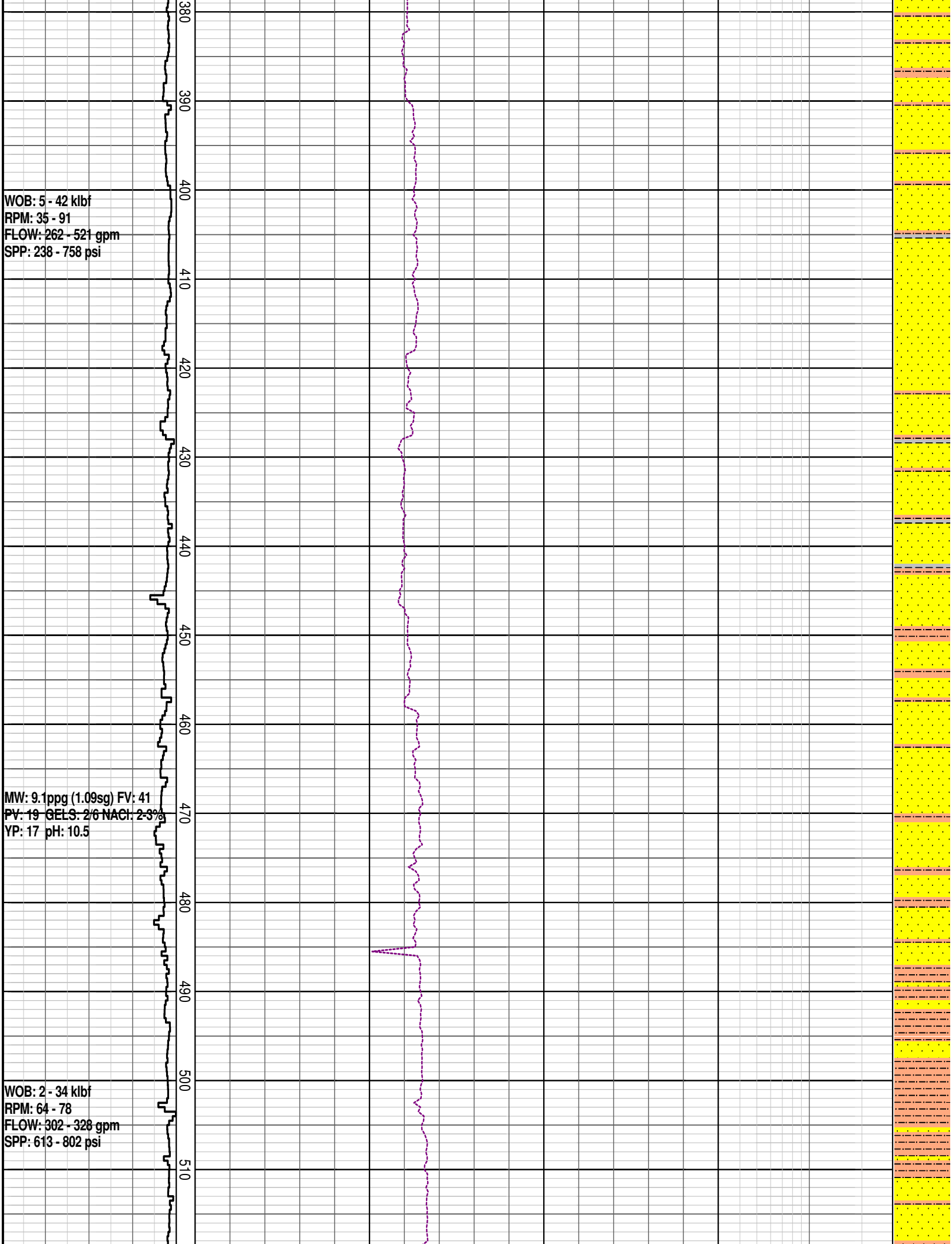


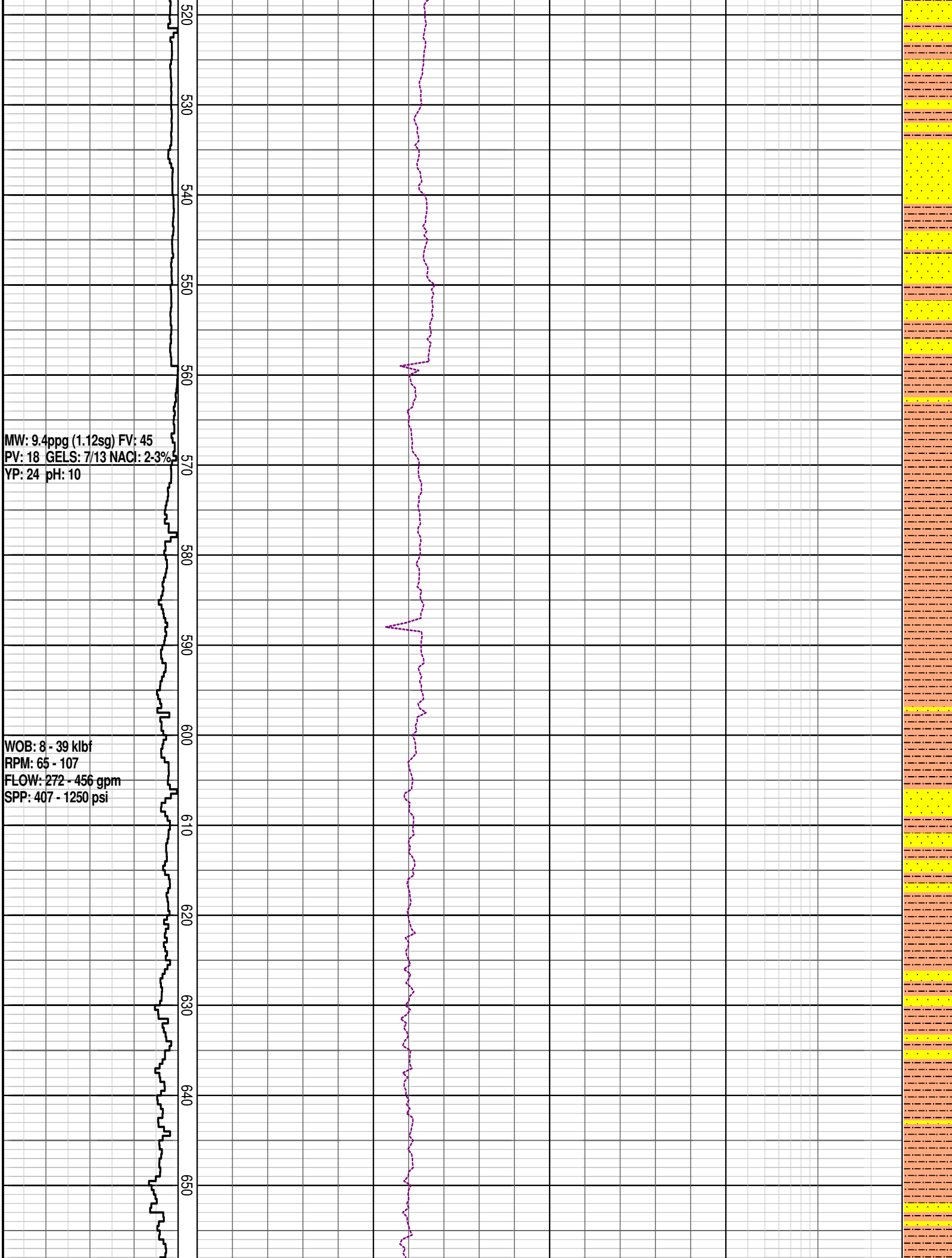


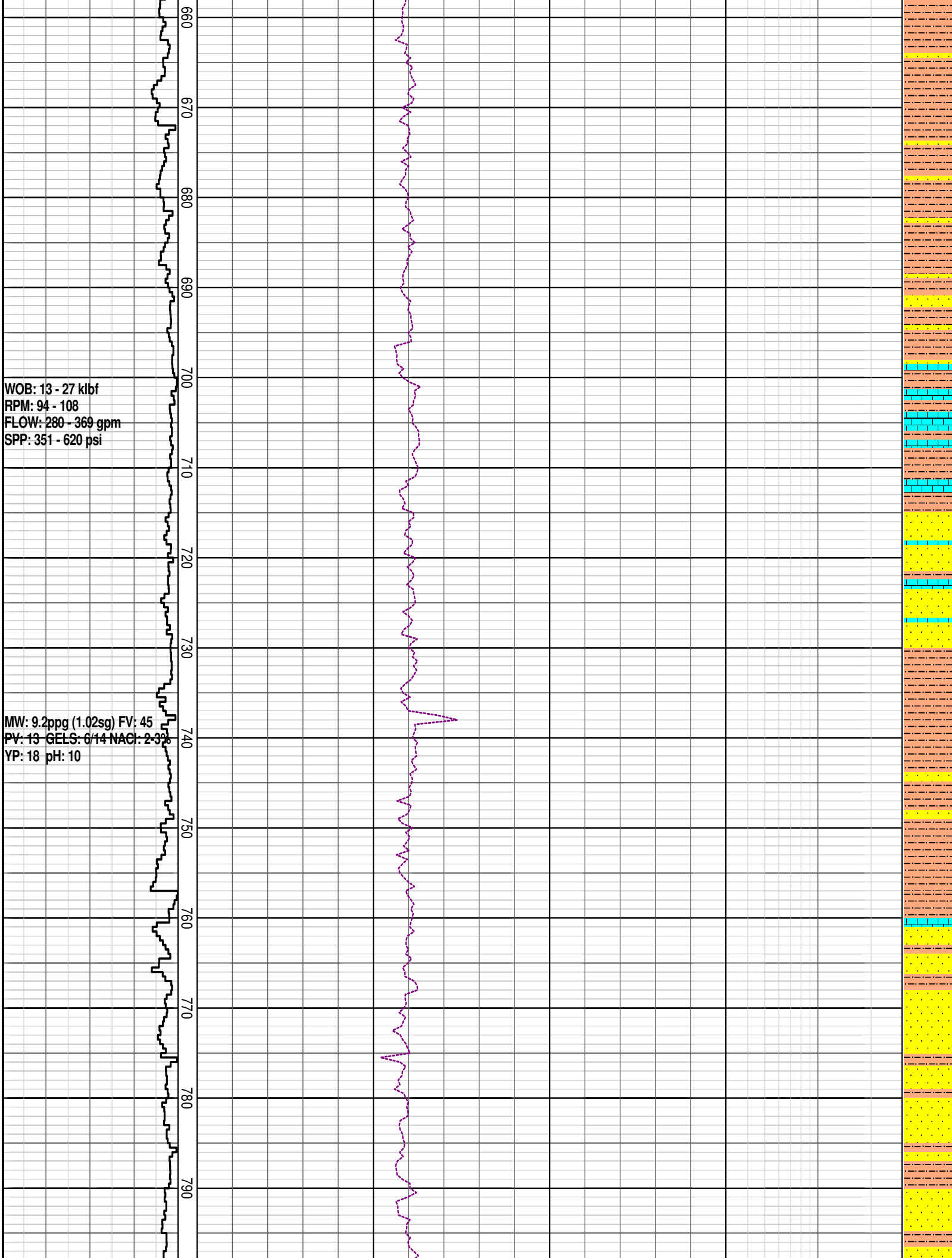
WOB: 5 - 42 klbf  
RPM: 35 - 91  
FLOW: 262 - 521 gpm  
SPP: 238 - 758 psi

MW: 9.1ppg (1.09sg) FV: 41  
PV: 19 GELS: 2/6 NACL: 2-3%  
YP: 17 pH: 10.5

WOB: 2 - 34 klbf  
RPM: 64 - 78  
FLOW: 302 - 328 gpm  
SPP: 613 - 802 psi



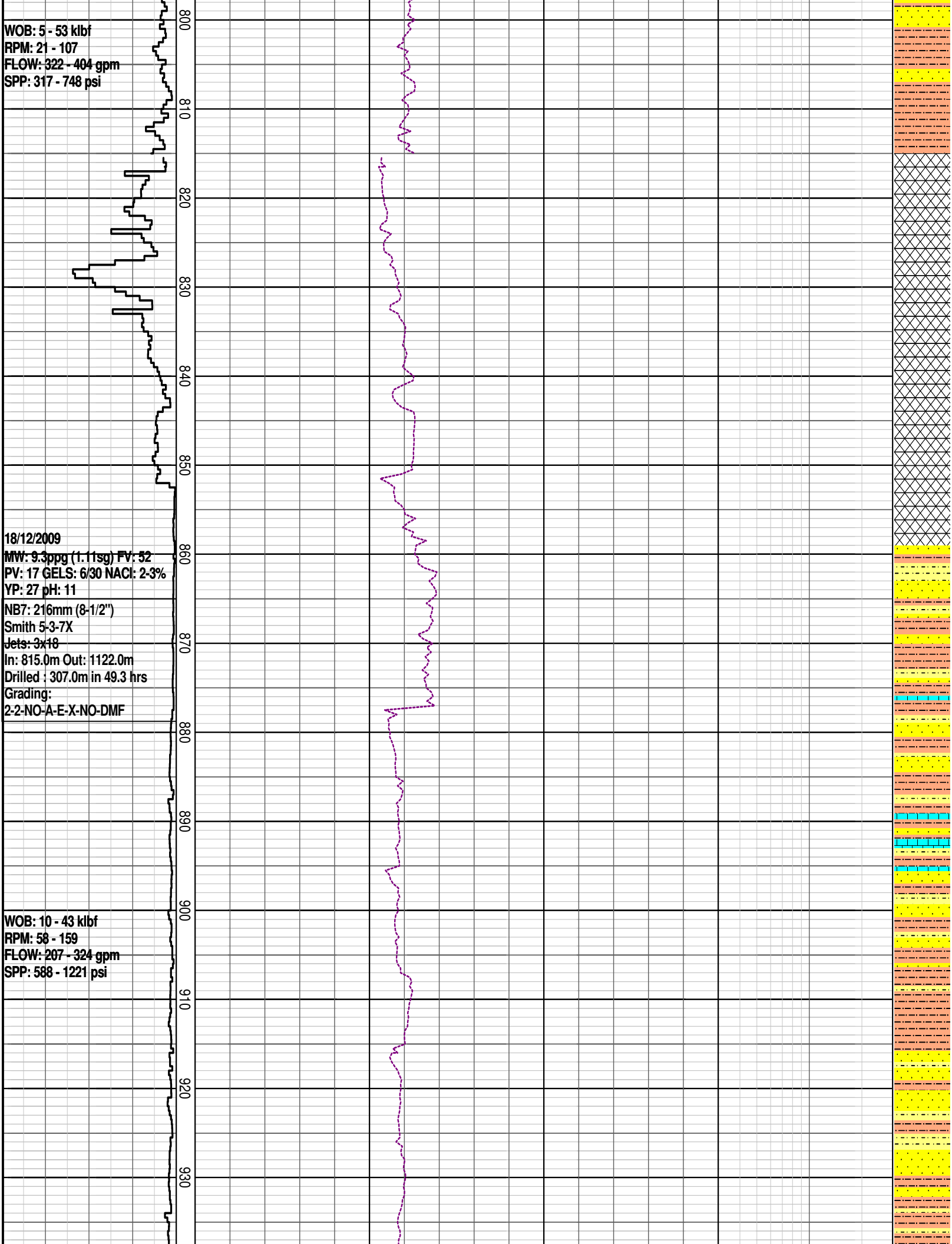




WOB: 5 - 53 klbf  
RPM: 21 - 107  
FLOW: 322 - 404 gpm  
SPP: 317 - 748 psi

18/12/2009  
MW: 9.3ppg (1.11sg) FV: 52  
PV: 17 GELS: 6/30 NACL: 2-3%  
YP: 27 pH: 11  
NB7: 216mm (8-1/2")  
Smith 5-3-7X  
Jets: 3x18  
In: 815.0m Out: 1122.0m  
Drilled : 307.0m in 49.3 hrs  
Grading:  
2-2-NO-A-E-X-NO-DMF

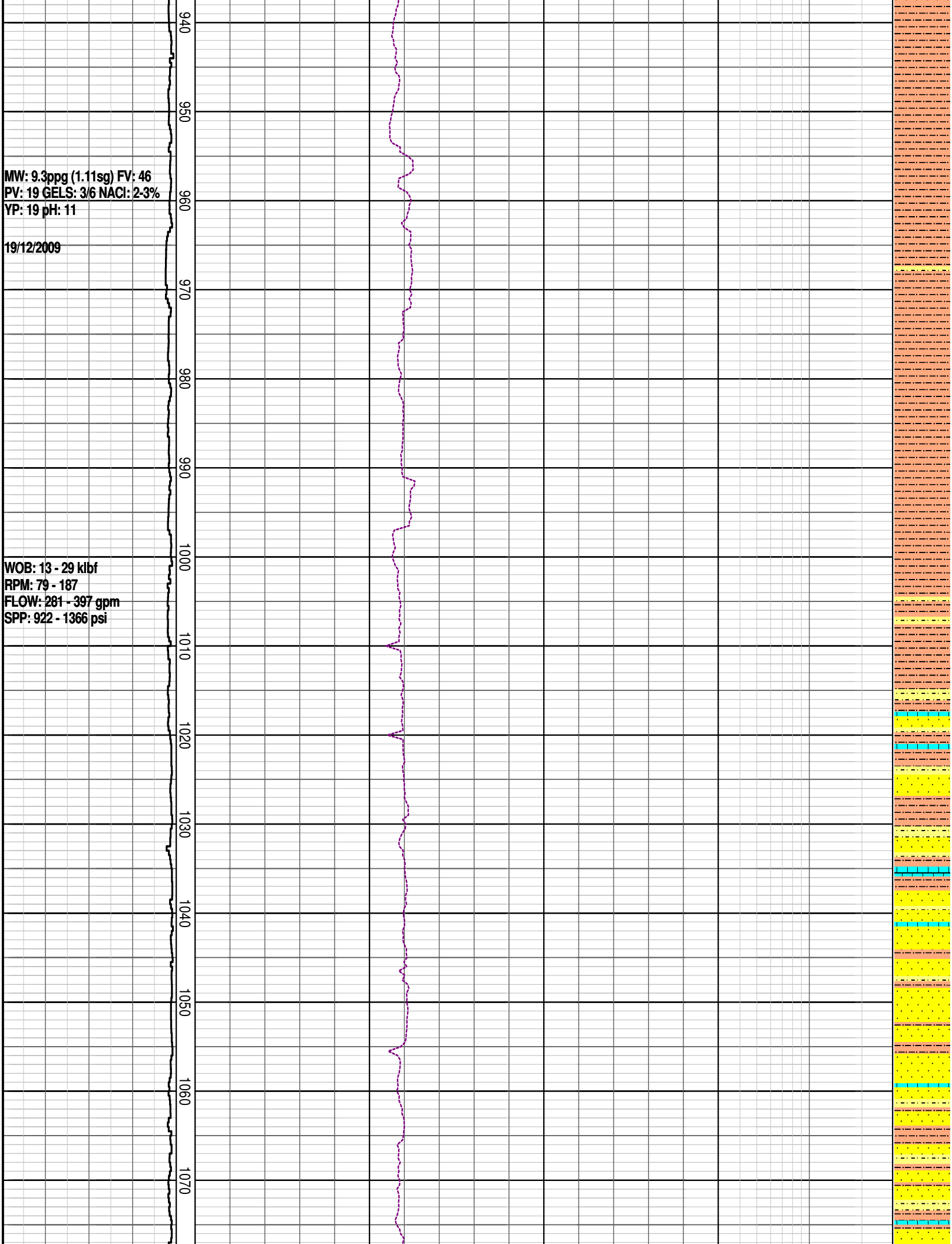
WOB: 10 - 43 klbf  
RPM: 58 - 159  
FLOW: 207 - 324 gpm  
SPP: 588 - 1221 psi



MW: 9.3ppg (1.11sg) FV: 46  
PV: 19 GELS: 3/6 NACl: 2-3%  
YP: 19 pH: 11

19/12/2009

WOB: 13 - 29 kbf  
RPM: 79 - 187  
FLOW: 281 - 397 gpm  
SPP: 922 - 1366 psi





MW: 9.3ppg (1.11sg) FV: 46  
PV: 18 GELS: 3/4 NACl: 2-3%  
YP: 18 pH: 10.5

20/12/2009

WOB: 11 - 25 klbf  
RPM: 80 - 173  
FLOW: 248 - 395 gpm  
SPP: 1024 - 1364 psi

MW: 9.3ppg (1.11sg) FV: 44  
PV: 19 GELS: 3/4 NACL: 2-3%  
YP: 16 pH: 10.5  
10m DEPTH CORRECTED  
AFTER  
BIT TRIP

SAMPLES FROM  
1123.0mMDRT ARE  
10.0m DEPTH CORRECTED  
START RECORDING DATA  
E/1117m  
NB8: 216mm (8-1/2")  
Smith PJ4480  
Jets: 3x18  
In: 1112.0m Out: 1389.0m  
Drilled : 277.0m in 60.9 hrs  
Grading:  
3-2-NO-A-E-X-NO-DMF

MW: 9.3ppg (1.11sg) FV: 43  
PV: 16 GELS: 2/3 NACL: 2-3%  
YP: 14 pH: 10.5

**22/12/2009**

WOB: 10 - 31 klbf  
RPM: 86 - 172  
FLOW: 292 - 394 gpm  
SPP: 1138 - 1394 psi

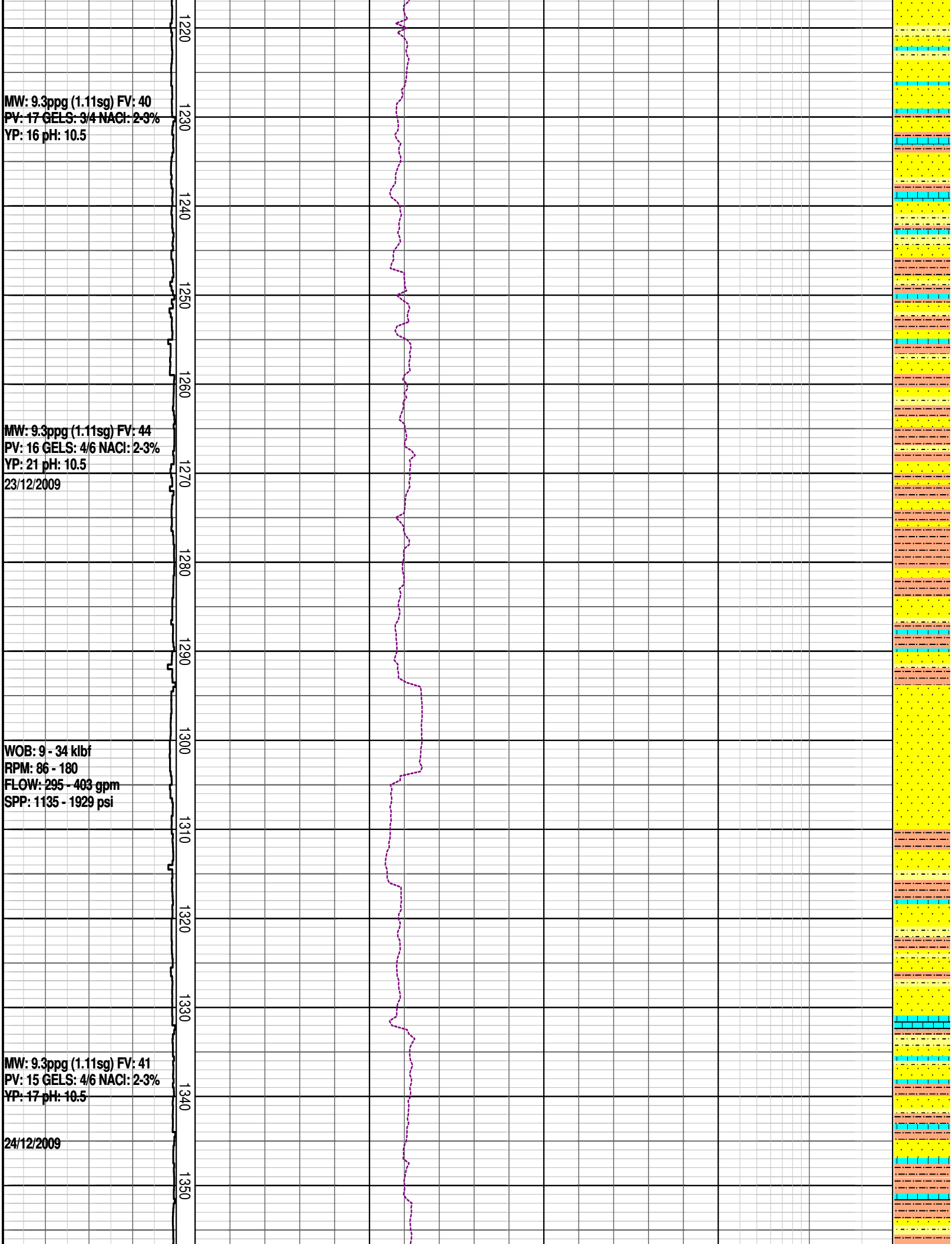
MW: 9.3ppg (1.11sg) FV: 40  
PV: 17 GELS: 3/4 NACL: 2-3%  
YP: 16 pH: 10.5

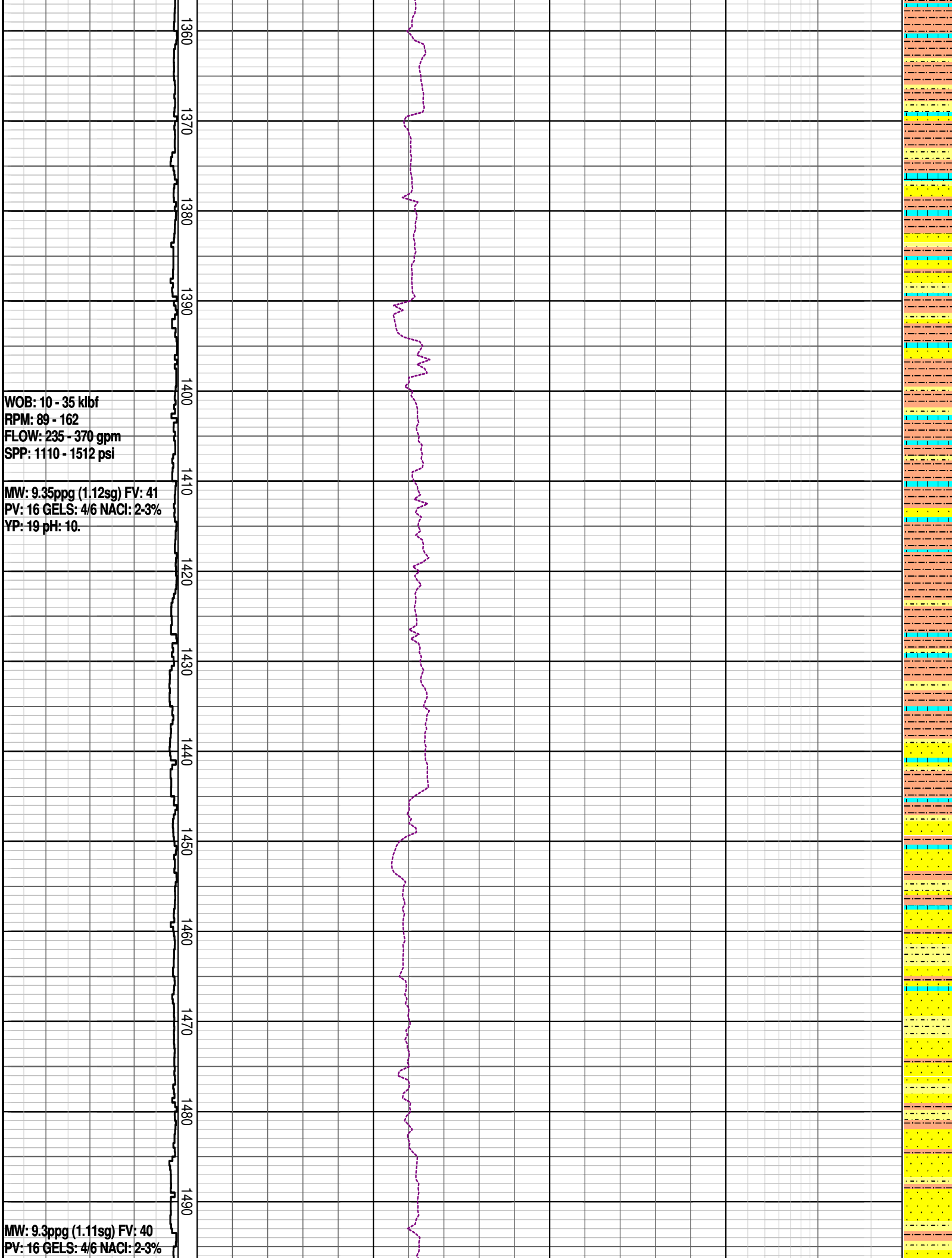
MW: 9.3ppg (1.11sg) FV: 44  
PV: 16 GELS: 4/6 NACL: 2-3%  
YP: 21 pH: 10.5  
23/12/2009

WOB: 9 - 34 klbf  
RPM: 86 - 180  
FLOW: 295 - 403 gpm  
SPP: 1135 - 1929 psi

MW: 9.3ppg (1.11sg) FV: 41  
PV: 15 GELS: 4/6 NACL: 2-3%  
YP: 17 pH: 10.5

24/12/2009





YP: 20 pH: 10.5

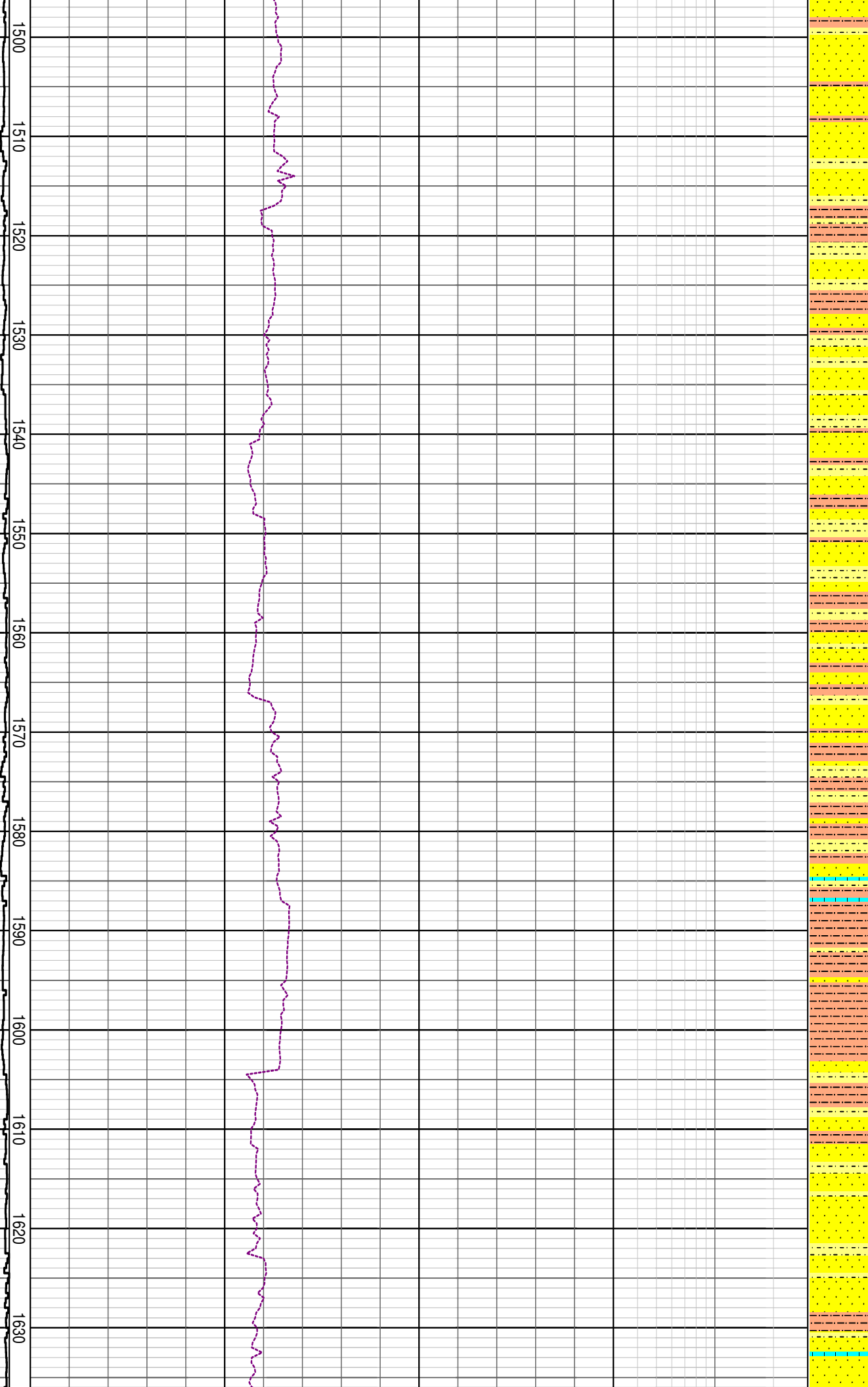
27/12/2009  
WOB: 12 - 35 kbf  
RPM: 81 - 169  
FLOW: 277 - 368 gpm  
SPP: 1006 - 1468 psi

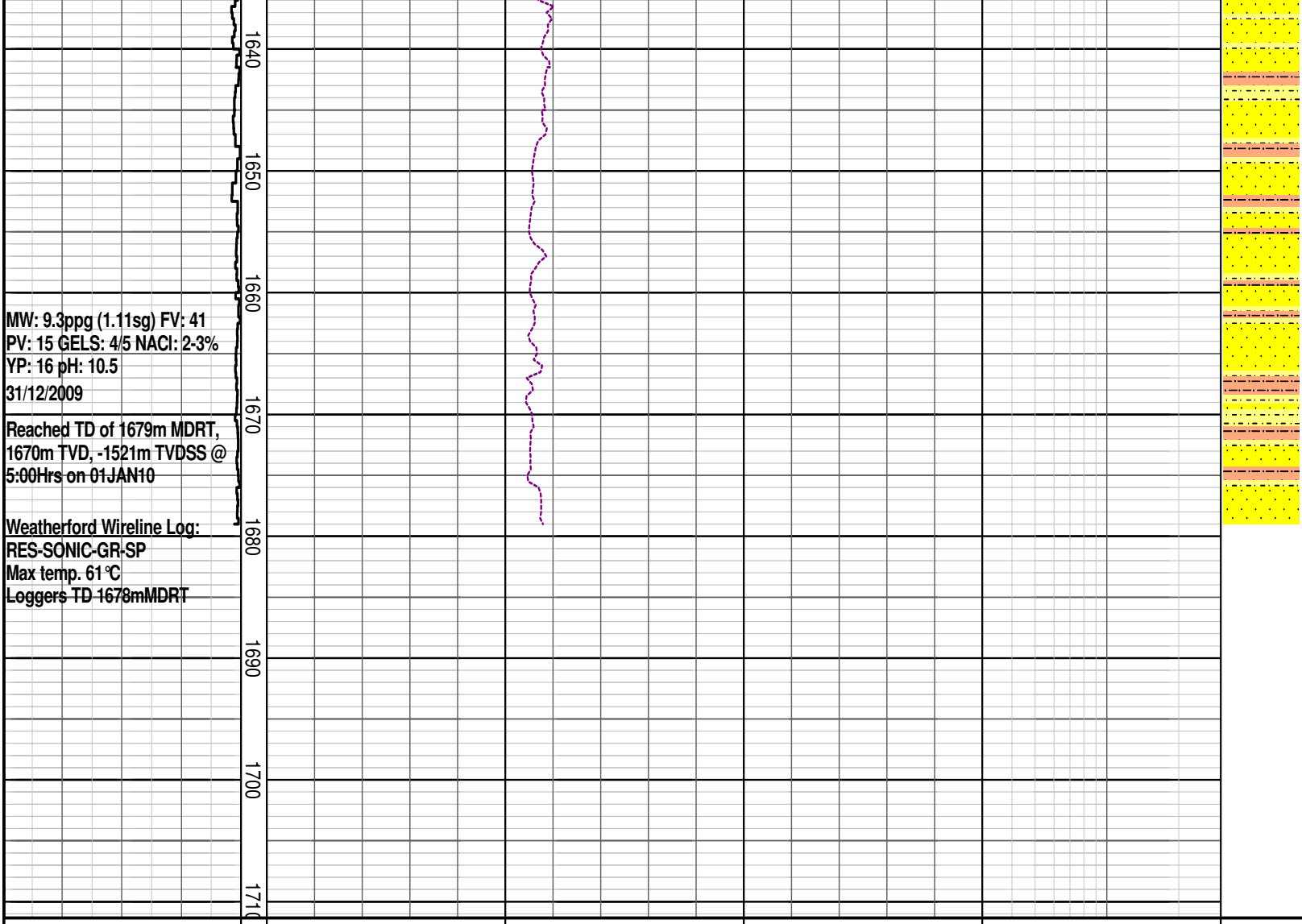
MW: 9.3ppg (1.11sg) FV: 41  
PV: 15 GELS: 4/6 NACL: 2-3%  
YP: 21 pH: 10.2

MW: 9.3ppg (1.11sg) FV: 42  
PV: 17 GELS: 4/6 NACL: 2-3%  
YP: 22 pH: 10.1

29/12/2009

WOB: 13 - 40 kbf  
RPM: 70 - 148  
FLOW: 265 - 384 gpm  
SPP: 1207 - 1529 psi





DRILLING DATA PLOT

